

Hanover and Elm Grove Community Safety Survey Summer 2019

Thursday, October 10, 2019

134 Surveys collected on line and by hand July-September

Promotions

Hanover Directory in August and September

Twitter @Heglat and @HanoverElmGrove

Facebook – Hanover Community Board

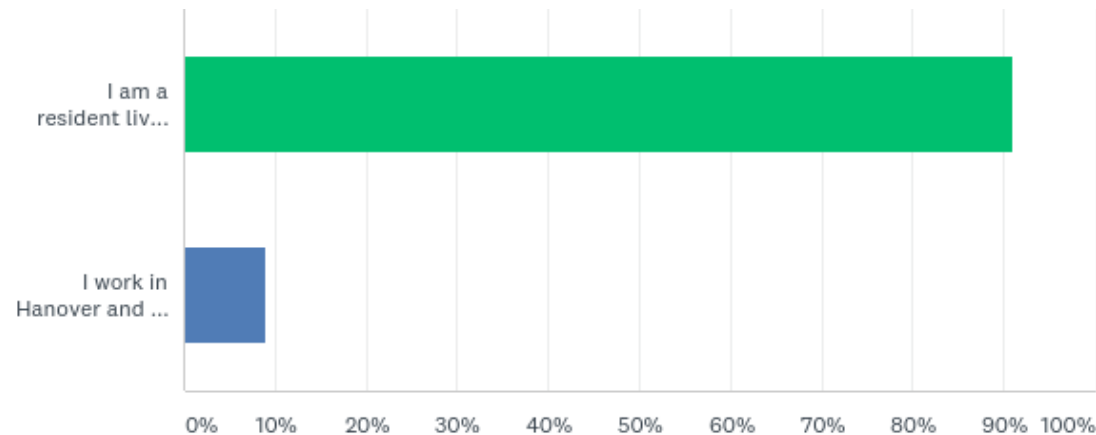
Website – Hanover and Elm Grove Communities Forum

**University of Sussex – Lewes Road Shop and Student
Publication**

Local shops

Q1: What sentence best describes you?

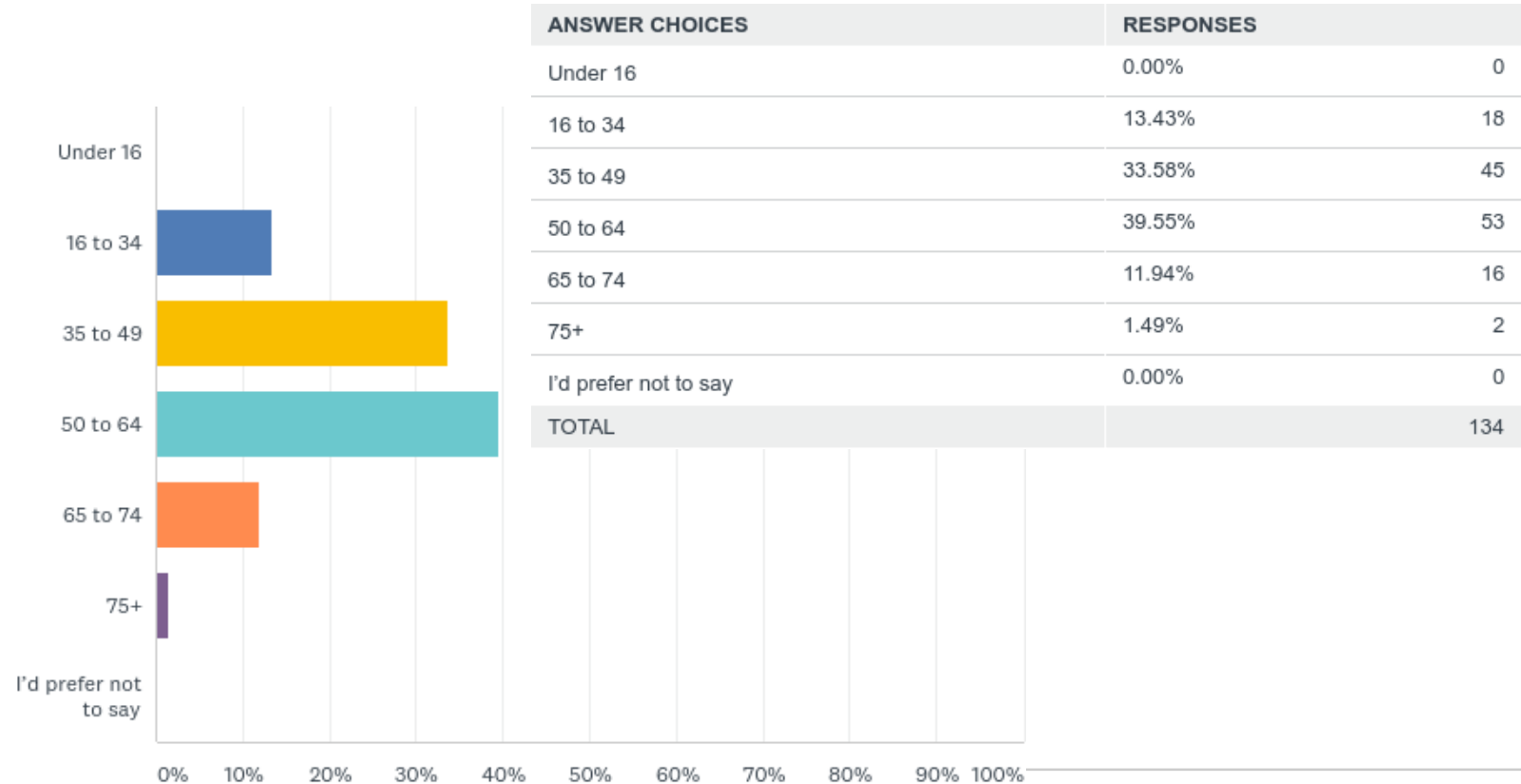
Answered: 134 Skipped: 0



ANSWER CHOICES	RESPONSES	
I am a resident living or working in Hanover and Elm Gove	91.04%	122
I work in Hanover and Elm Grove but don't live here	8.96%	12
TOTAL		134

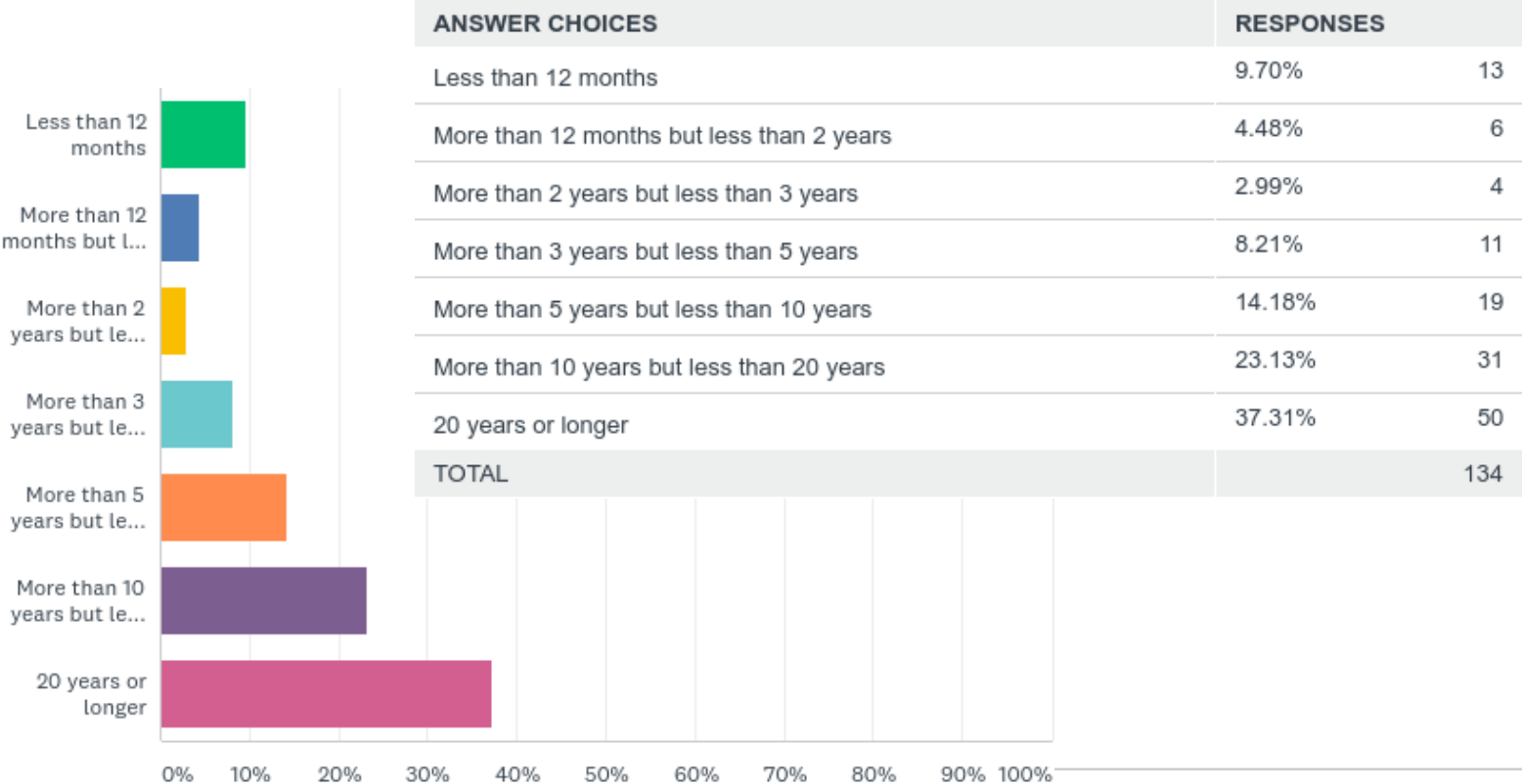
Q2: What is your age? (Please select one option only)

Answered: 134 Skipped: 0



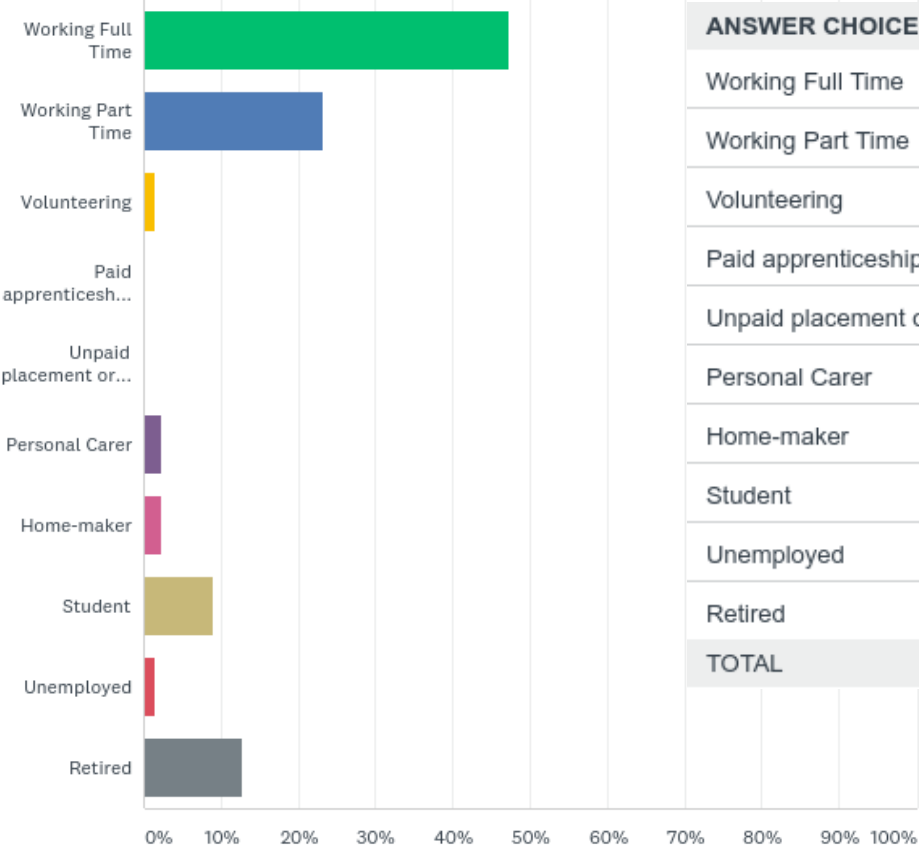
Q3: How long have you lived or worked in Hanover and Elm Grove?

Answered: 134 Skipped: 0



Q4: Which of the options below best describes your employment status?

Answered: 133 Skipped: 1



ANSWER CHOICES	RESPONSES	
Working Full Time	47.37%	63
Working Part Time	23.31%	31
Volunteering	1.50%	2
Paid apprenticeships, traineeship, placement or internship	0.00%	0
Unpaid placement or internship	0.00%	0
Personal Carer	2.26%	3
Home-maker	2.26%	3
Student	9.02%	12
Unemployed	1.50%	2
Retired	12.78%	17
TOTAL		133

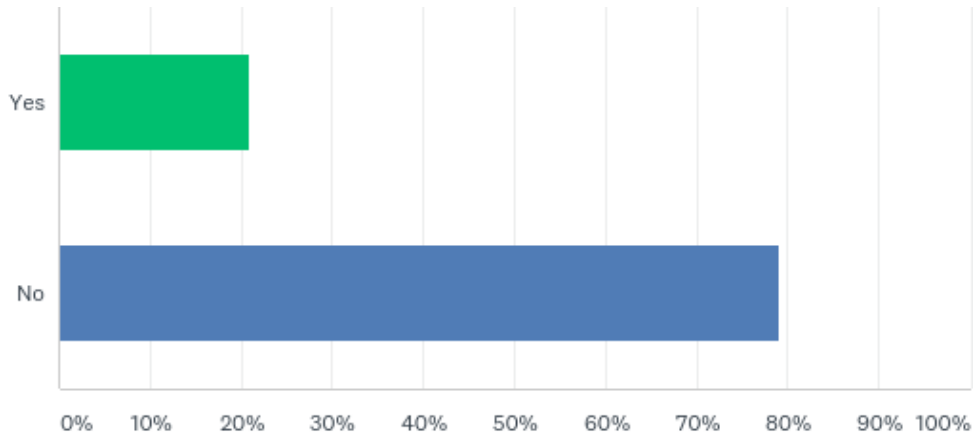
Q5: Which road/street are you commenting on? (Please select one option only)

Answered: 133 Skipped: 1

Total Streets in Hanover and Elm Grove	101	
Streets that returned the Survey	52	
Streets where no survey responses were received	49	
Streets with the Most Responses	Elm Grove	10
	Phoenix Place	8
	Hanover St	6
	Islingword Rd	6
	Bernard Rd	5
	Brading Rd	5

Q6: Have you been a victim of crime within the last 2 years?

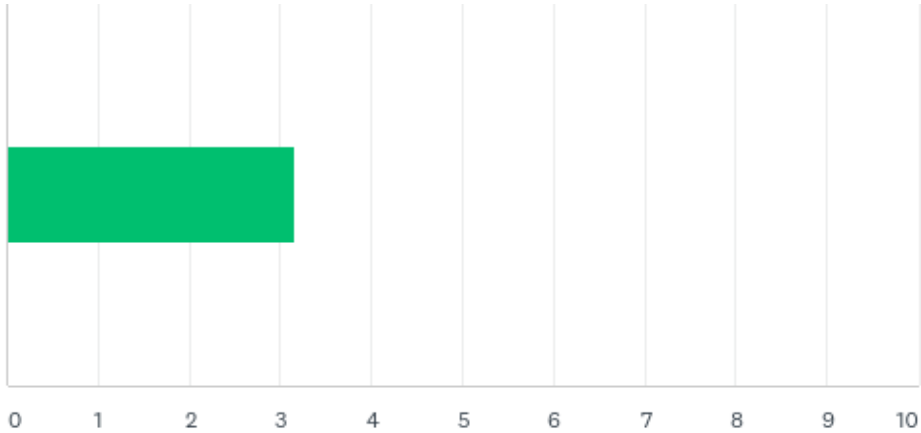
Answered: 134 Skipped: 0



ANSWER CHOICES	RESPONSES	
Yes	20.90%	28
No	79.10%	106
TOTAL		134

Q7: On a scale of 0 to 10, where 0 is no effect at all and 10 is a total effect, how much is YOUR OWN quality of life affected by FEAR OF CRIME?

Answered: 131 Skipped: 3



ANSWER CHOICES	AVERAGE NUMBER	TOTAL NUMBER	RESPONSES
	3	415	131
Total Respondents: 131			

Q8: Most of us worry at some time or other about being the victim of a crime. Please indicate how worried you are or aren't about each of the following... (Please provide an answer for each row)

Answered: 133 Skipped: 1

Top Fears	Extremely/Very worried	Fairly Worried
Having Home Broken into and something stolen	13.54%	24.81%
	<i>N= 18</i>	<i>N=33</i>
Being Mugged or Robbed	14.28%	21.0 5%
	<i>N=19</i>	<i>N= 28</i>
Being a victim of Cyber Crime	12.88%	36.36%
	<i>N= 17</i>	<i>N=48</i>
Being a victim of Identify Theft	12.98%	30.53%
	<i>N= 17</i>	<i>N=40</i>

Q8: Most of us worry at some time or other about being the victim of a crime. Please indicate how worried you are or aren't about each of the following... (Please provide an answer for each row)

Answered: 133 Skipped: 1

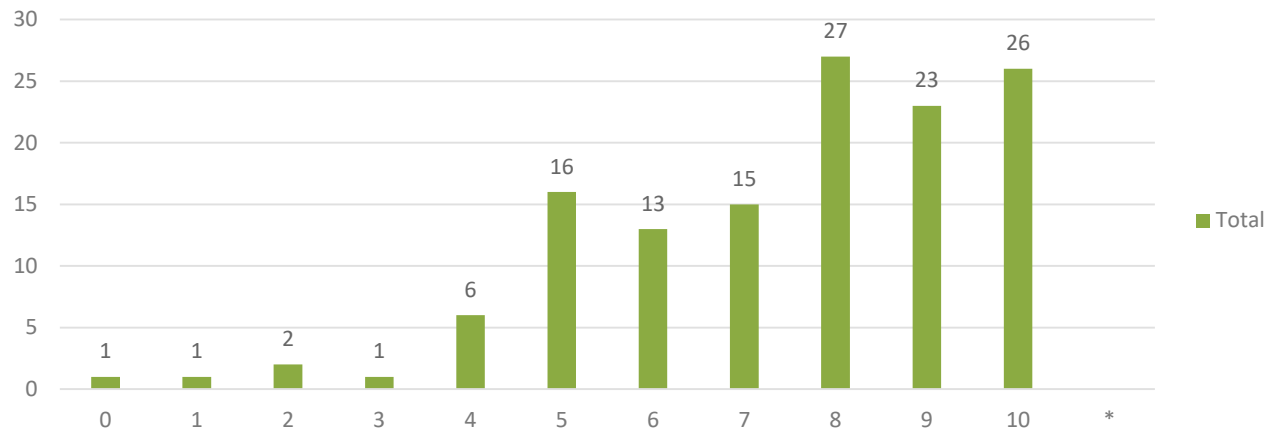
What Respondents said they feared the least	Not worried	Responses
Items stolen from the car	40.63%	N= 53
Car stolen	45.32%	N=38
Being sexually assaulted, harrassed or raped	32.22%	N=43

Q9: When thinking about your EXPERIENCE of living or working in the area and the PRIORITIES for CRIME AND COMMUNITY Safety, how important are the following...

Rank	Top Priorities	Extremely/ Very Worried		Fairly	Priorities
1	Physical Assault/Violent Behaviour	82.84%		13.43%	96.27%
2	Burglary/Theft	66.92%		28.57%	95.49%
3	People Dealing Illegal Drugs	69.40%		23.13%	92.53%
4	Vandalism	54.48%		37.31%	91.79%
5	Domestic violence	73.14%		17.91%	91.05%
6	Speeding traffic	58.64%		30.83%	89.47%
7	Noisy Neighbours	48.12%		36.84%	84.96%
8	People Using Illegal drugs	50.75%		30.60%	81.35%
9	People being drunk/rowdy	42.53%		38.81%	81.34%
10	Anti Social Street Drinking	37.60%		40.60%	78.20%

Q10: How likely is it that you would recommend Hanover and Elm Grove as a safe place to live or work? Where 0 = Not at all likely and 10 = Extremely likely.

Q10 - How likely are you to recommend Hanover and Elm Grove as a safe place to live and/or work?



Promoters are those that scored 9-10. They are ambassadors for the area

Passives (score 7-8) - Neutral and unlikely to tarnish the reputation of the area

Detractors - (score 0-6) mainly dissatisfied and who may be negative about the area

Net Promoter Score (Businesses at 2017)

Source Statista 2019

	Count	Percentage	Net Promoter Score
Detractors	40	30.53%	
Passives	42	32%	
Promoters	49	37.40%	
Total	131		6.87%

Net Promoter Score by Business 2017 (1st Quarter)

